

LEADING REGENERATION

**Geistlich**  
Biomaterials

Who is the collagen expert?  
**Exactly.**

**Geistlich Fibro-Gide®**

for gaining soft-tissue thickness.



**EXACTLY**  
 like no other.

 **swiss made**





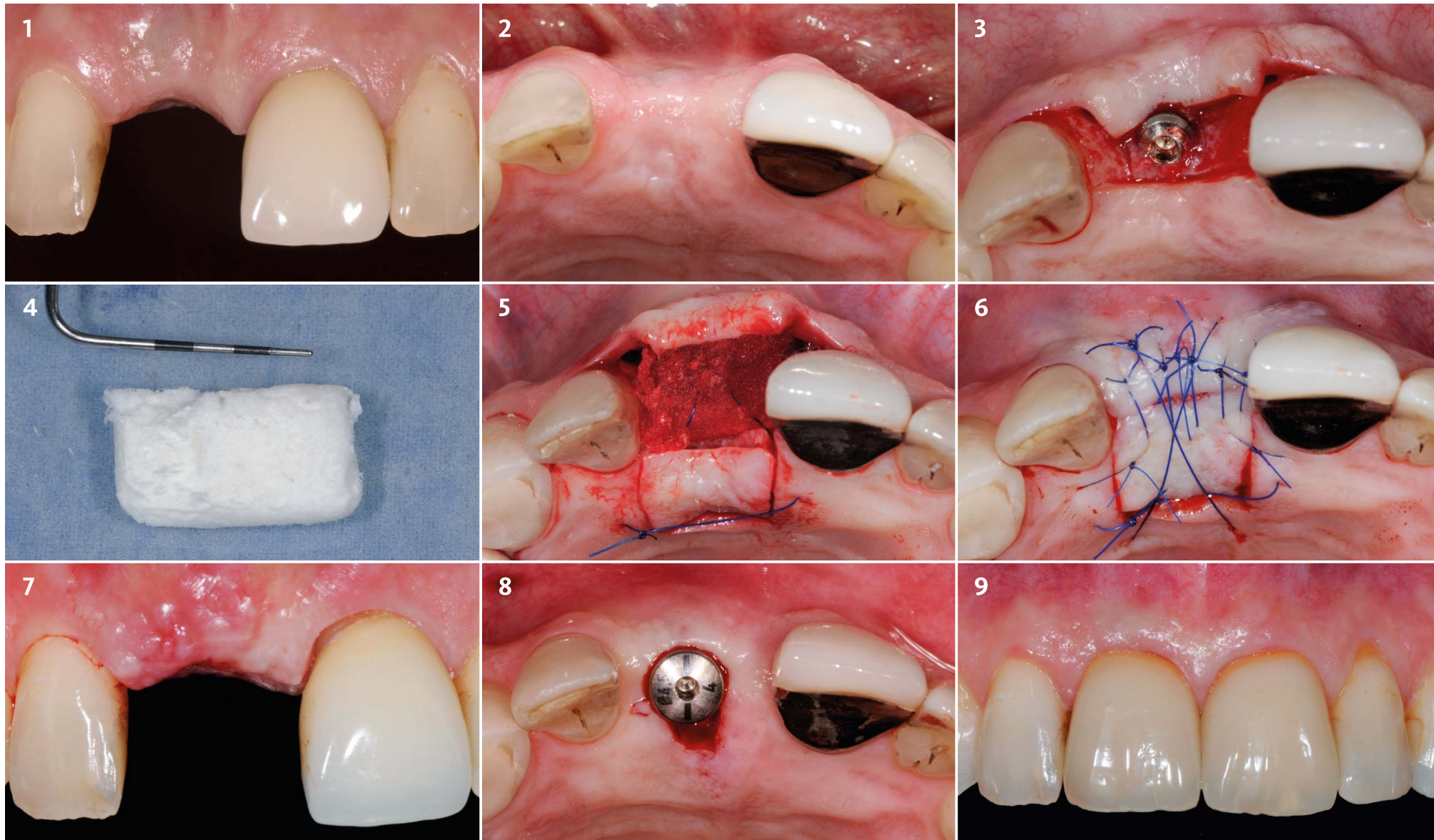
# Insufficient Soft-Tissue Thickness in a Single Tooth Gap in the Anterior Maxilla

“Geistlich Fibro-Gide® is one of the major innovations in regenerative dentistry in the last 20 years.”

PD Dr. Daniel Thoma | Zurich, Switzerland

**Aim:** Gain in soft-tissue thickness in the esthetic area with Geistlich Fibro-Gide®.

**Conclusion:** After 6 months, the final restorations were placed. The natural look of the augmented soft-tissue can be appreciated, and no implant translucency is visible.



- 1 Baseline frontal view: missing central incisor. Implant visible through mucosa due to thin biotype.

2 Baseline occlusal view: soft-tissue deficit in the buccal and occlusal area.

3 Flap elevation on the buccal side using a full flap crestally and a split flap buccally.
- 4 Adaption of Geistlich Fibro-Gide® (15 × 20 × 6 mm) to the defect size.

5 Palatal island flap prepared to allow for tension-free wound closure. Geistlich Fibro-Gide® in situ, immobilized with a mattress suture.

6 Tension-free wound closure using single interrupted sutures (Daflon 5-0, Braun).
- 7 Suture removal 7 days post-surgery.

8 Abutment connection.

9 6 months follow-up: final crown in place.



# IN A NUTSHELL

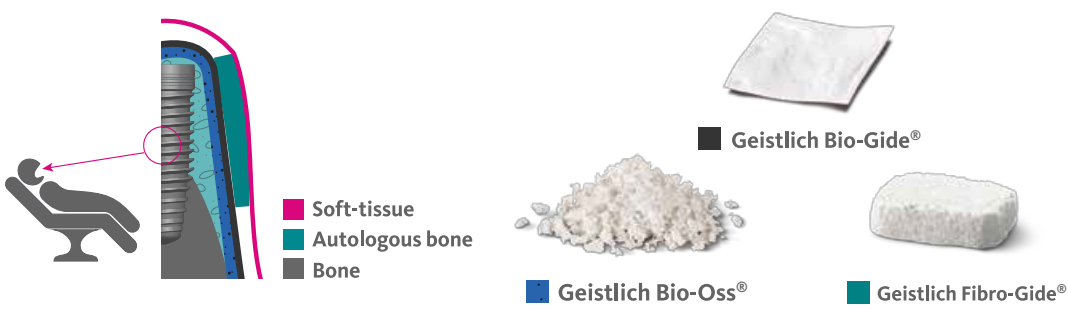
Soft-tissue augmentation simultaneous with GBR and implant placement in esthetic sites using Geistlich Fibro-Gide®: A feasibility study



Soft-tissue thickness in esthetic sites:  
Is the use of **Geistlich Fibro-Gide®**  
together with GBR safe and feasible?

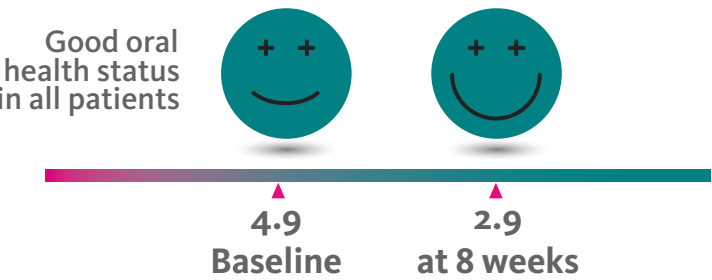


## TREATMENT

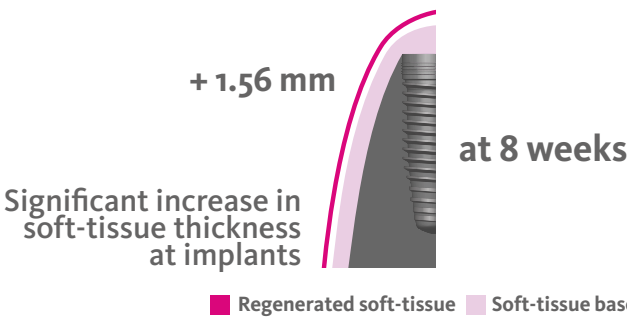


## PATIENT PERCEPTION

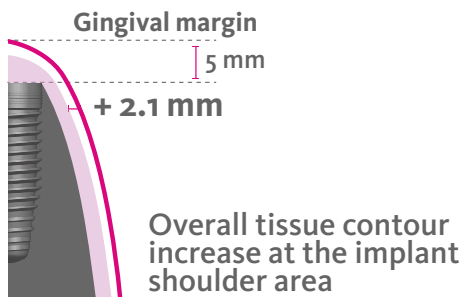
Patient reported outcome assessed with Oral Health Impact Profile (OHIP)



## SOFT-TISSUE THICKNESS



## CONTOUR INCREASE



## CONCLUSIONS

Soft-tissue augmentation simultaneous with GBR and implant placement in esthetic sites using Geistlich Fibro-Gide® is



Chappuis V et al., 2018.  
The International Journal of Periodontics and Restorative Dentistry  
Geistlich Fibro-Gide®: Collagen matrix (CMX)

# SPECIAL LAUNCH OFFER : BUY 3 GET 4



Geistlich  
**Fibro-Gide®**  
15 X 20 X 6mm

Max one offer per client. | Offer valid until 12/07/2019 or until supplies last.



# Do you value products with clinical evidence? Exactly.

## Geistlich Biomaterials – 100% regeneration expertise

- Production of innovative bio-derived products for bone and soft-tissue regeneration.
- From research, development and production to marketing: 100% regeneration expertise under one roof.
- More than 165 years of experience in bone and collagen processing.
- Close ties with the international dental and scientific community to find solutions to improve patient's quality of life.
- Our pioneering regenerative dentistry products include the Geistlich Bio-Oss®, Geistlich Bio-Gide®, Geistlich Mucograft® and Geistlich Fibro-Gide® product families.

**Geistlich's Collagen Expertise:**  
The first volume-stable collagen matrix  
designed for gaining soft-tissue thickness.



 **swiss made**

For more information contact your sales representative:

✉ [vesselina.moreno@mediplus.be](mailto:vesselina.moreno@mediplus.be) ☎ +32 (0)473 97 85 35

✉ [isabelle.bugli@mediplus.be](mailto:isabelle.bugli@mediplus.be) ☎ +32 (0)496 11 86 76

Or contact the Mediplus office:

✉ [info@mediplus.be](mailto:info@mediplus.be) ☎ +32 (0)2 653 88 18

Mediplus  
Rue des Bleuets 76  
B-1330 Rixensart  
Tel: +32 (0)2 653 88 18  
Fax: +32 (0)2 654 20 03  
[info@mediplus.be](mailto:info@mediplus.be)